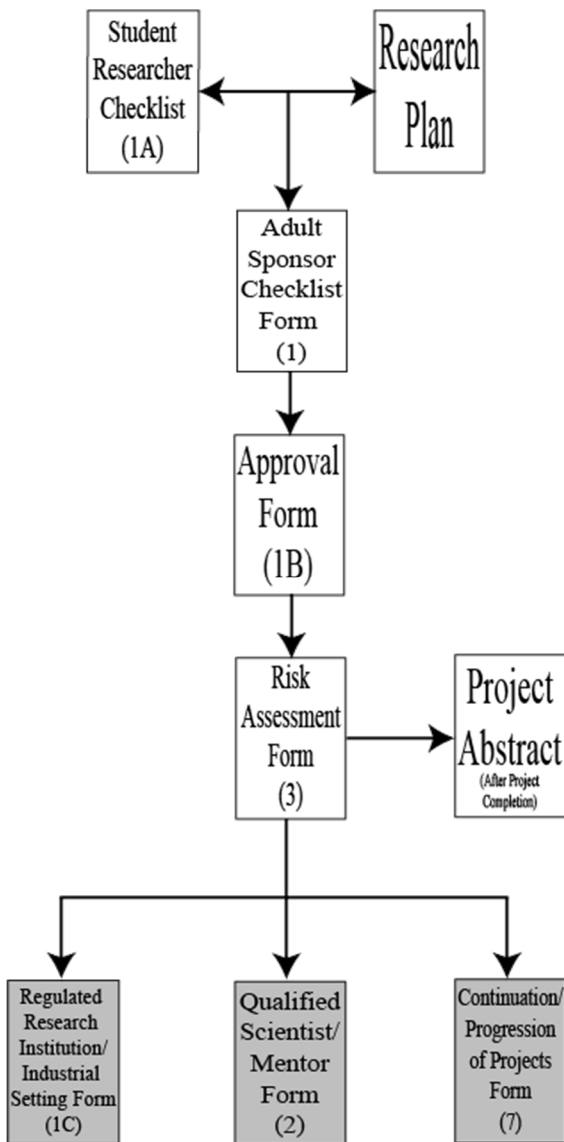


Requirements for ALL Projects

ALL projects must have the following forms completed:



- **Student Researcher Checklist Form (1A)** – this is information about the student(s) working on the project, when the experimentation will take place and where. This is to be completed by the Student Researcher before submitting it along with the Research Plan, Approval Form 1B, Risk Assessment Form 3 and other relevant forms to the Adult Sponsor for approval.
- **Research Plan** – a brief, but detailed explanation of the rationale behind the project idea, the research question(s), the procedures/methodology, the risk assessment and background exploration. This is to be completed by the Student Researcher PRIOR to experimentation and written in the present or future tense.
- **Adult Sponsor Checklist Form (1)** – this is a review of the details about the project and whether or not it requires prior approval or not. This is to be completed by the Adult Sponsor in collaboration with the Student Researcher PRIOR to experimentation.
- **Approval Form (1B)** – this is where the various people sign off their approval of the project. A separate Approval Form is required for each Student Researcher if it is a team project.
- **Risk Assessment Form (3)** – this is a review of the risks that might be associated with the project. This is to be completed by the Student Researcher in collaboration with the Adult Sponsor, Designated Supervisor and/or Qualified Scientist/Mentor PRIOR to experimentation.
- **Project Abstract** – this is a summary of the project that is completed once the experimentation is done and the data has been analyzed.

Some additional forms that MIGHT be required include:

- **Qualified Scientist/Mentor Form (2)** – this is used to document when the Student Researcher works with a mentor who is a professional in the area of their project. This is to be completed by the Qualified Scientist/Mentor who is advising and/or supervising the Student Researcher(s) PRIOR to experimentation.
- **Regulated Research Institution/Industrial Setting Form (1C)** – this is a summary of what the Student Researcher did at a professional lab. This is to be completed by the supervising adult who is affiliated with the laboratory and who has first-hand knowledge of the student's work and is completed AFTER experimentation.
- **Continuation/Progression of Projects Form (7)** – this is used to document prior work that the Student Researcher has done in the same field of study as the current work. This is to be completed by the Student Researcher AFTER experimentation and include copies of the previous years' abstract and Research Plan.